

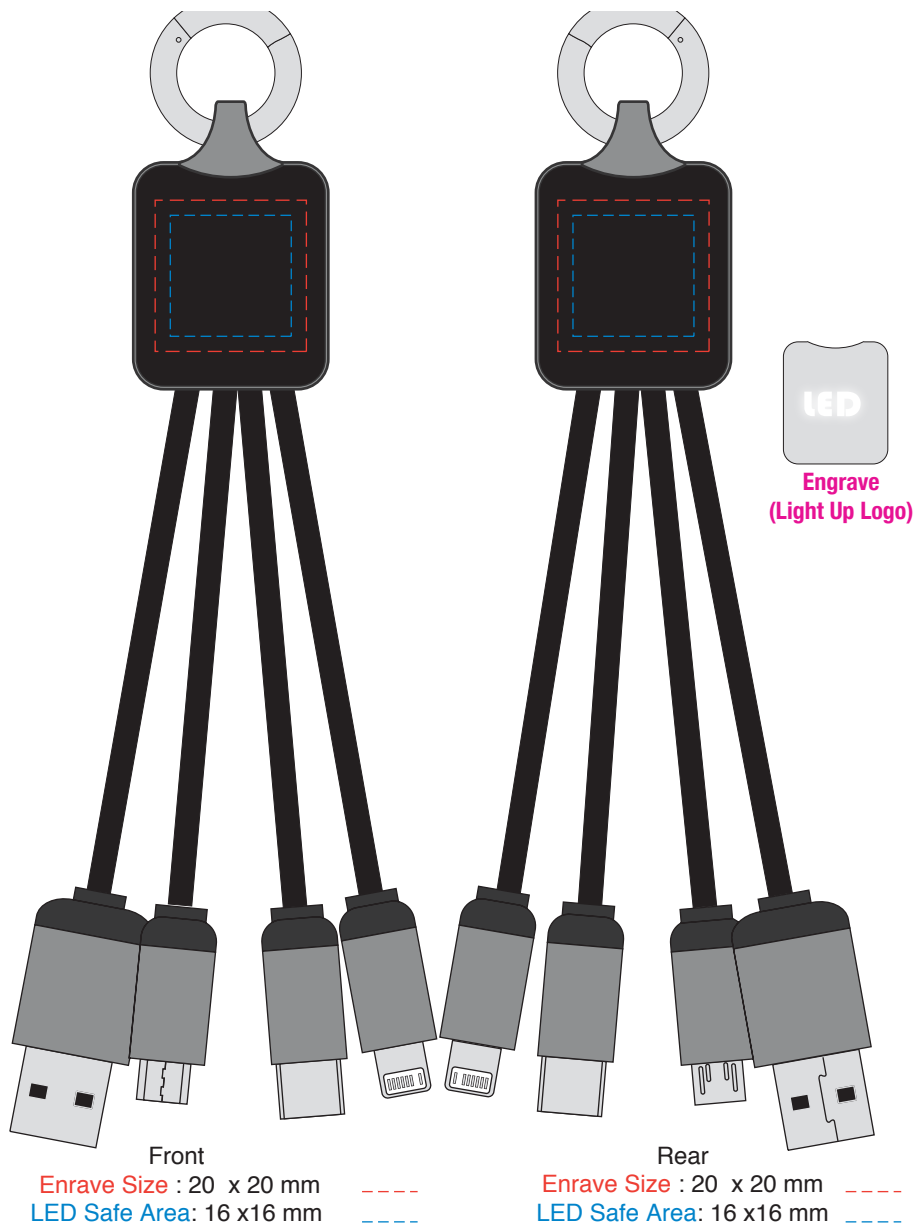
## AR870A

### Atesso 3n1 Light Up Charge Cable - Rectangle

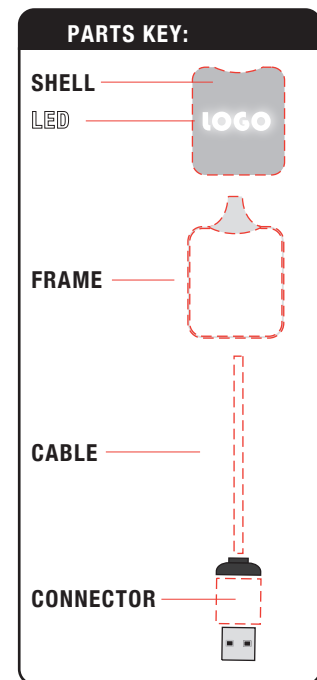
**Print Process:** Light-Up Logo, Pad Print is an option

**Product Size:** Cable Head: 38 x 26 x 12.6 mm, Length: 150 mm

**Colours:** Product Colour: Black/Silver & White (LED), Black/Gold & White (LED) (MOQ-100 pcs). Black/Blue & Blue (LED), Black/Orange & Orange (LED), Black/Red & Red (LED) (MOQ-250 pcs). Refer to our PDF template. Blue PMS 293C, Orange PMS 171C, Red PMS 199C



	SILVER
SHELL	black
FRAME	silver
LED	white
CABLE	black
CONNECTOR	silver
FINISH	UV Gloss



Please follow these artwork guidelines: • Use and supply vector-based artwork • Illustrator compatible EPS or PDF with all fonts outlined • Indicate any critical colour details with the correct PMS colour • All Pantone colours need to be supplied as Pantone Coated (PMS C) colours • All details need to be “embedded” in the file, i.e. no linked artwork should be provided • Bleed is crucial when printing edge to edge. Artwork must extend beyond the finished and trim size dimensions.

## AR870A

### Atesso 3n1 Light Up Charge Cable - Rectangle

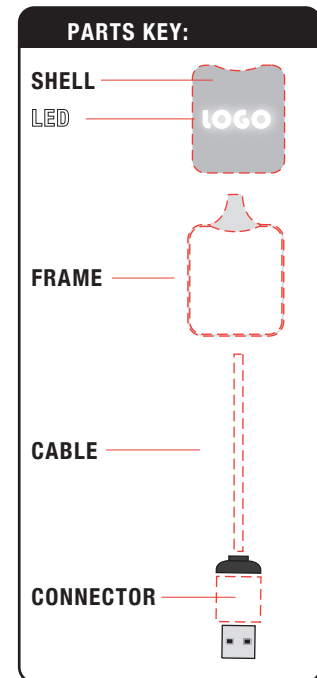
**Print Process:** Light-Up Logo, Pad Print is an option

**Product Size:** Cable Head: 38 x 26 x 12.6 mm, Length: 150 mm

**Colours:** Product Colour: Black/Silver & White (LED), Black/Gold & White (LED) (MOQ-100 pcs). Black/Blue & Blue (LED), Black/Orange & Orange (LED), Black/Red & Red (LED) (MOQ-250 pcs). Refer to our PDF template. Blue PMS 293C, Orange PMS 171C, Red PMS 199C



	BLUE	PMS 293C
SHELL	black	
FRAME	black	
LED	blue	
CABLE	black	
CONNECTOR	blue	
FINISH	UV Gloss	



Please follow these artwork guidelines: • Use and supply vector-based artwork • Illustrator compatible EPS or PDF with all fonts outlined • Indicate any critical colour details with the correct PMS colour • All Pantone colours need to be supplied as Pantone Coated (PMS C) colours • All details need to be “embedded” in the file, i.e. no linked artwork should be provided • Bleed is crucial when printing edge to edge. Artwork must extend beyond the finished and trim size dimensions.

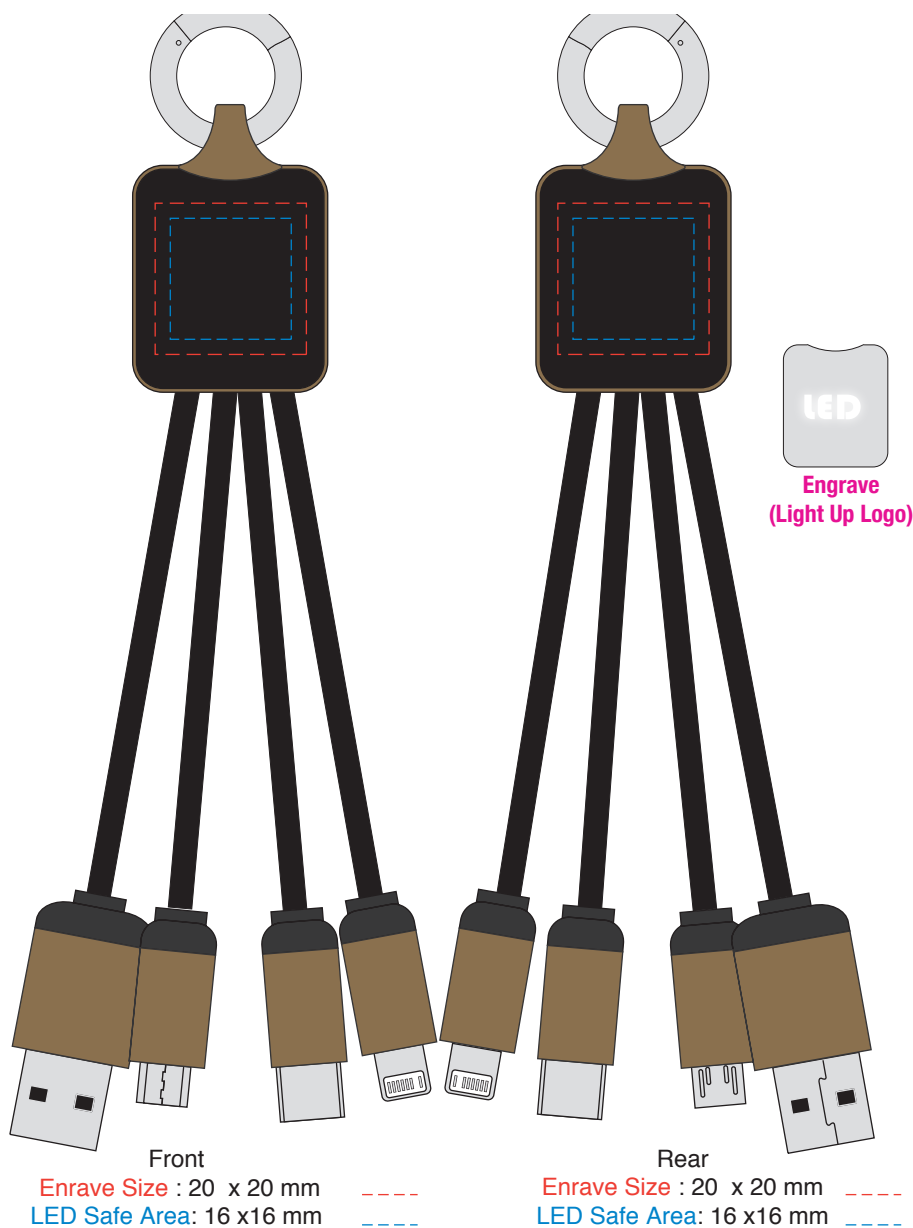
## AR870A

### Atesso 3n1 Light Up Charge Cable - Rectangle

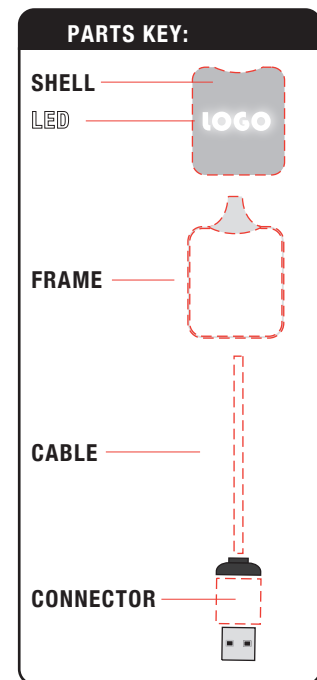
**Print Process:** Light-Up Logo, Pad Print is an option

**Product Size:** Cable Head: 38 x 26 x 12.6 mm, Length: 150 mm

**Colours:** Product Colour: Black/Silver & White (LED), Black/Gold & White (LED) (MOQ-100 pcs). Black/Blue & Blue (LED), Black/Orange & Orange (LED), Black/Red & Red (LED) (MOQ-250 pcs). Refer to our PDF template. Blue PMS 293C, Orange PMS 171C, Red PMS 199C



	GOLD
SHELL	black
FRAME	gold
LED	white
CABLE	black
CONNECTOR	gold
FINISH	UV Gloss



Please follow these artwork guidelines: • Use and supply vector-based artwork • Illustrator compatible EPS or PDF with all fonts outlined • Indicate any critical colour details with the correct PMS colour • All Pantone colours need to be supplied as Pantone Coated (PMS C) colours • All details need to be “embedded” in the file, i.e. no linked artwork should be provided • Bleed is crucial when printing edge to edge. Artwork must extend beyond the finished and trim size dimensions.

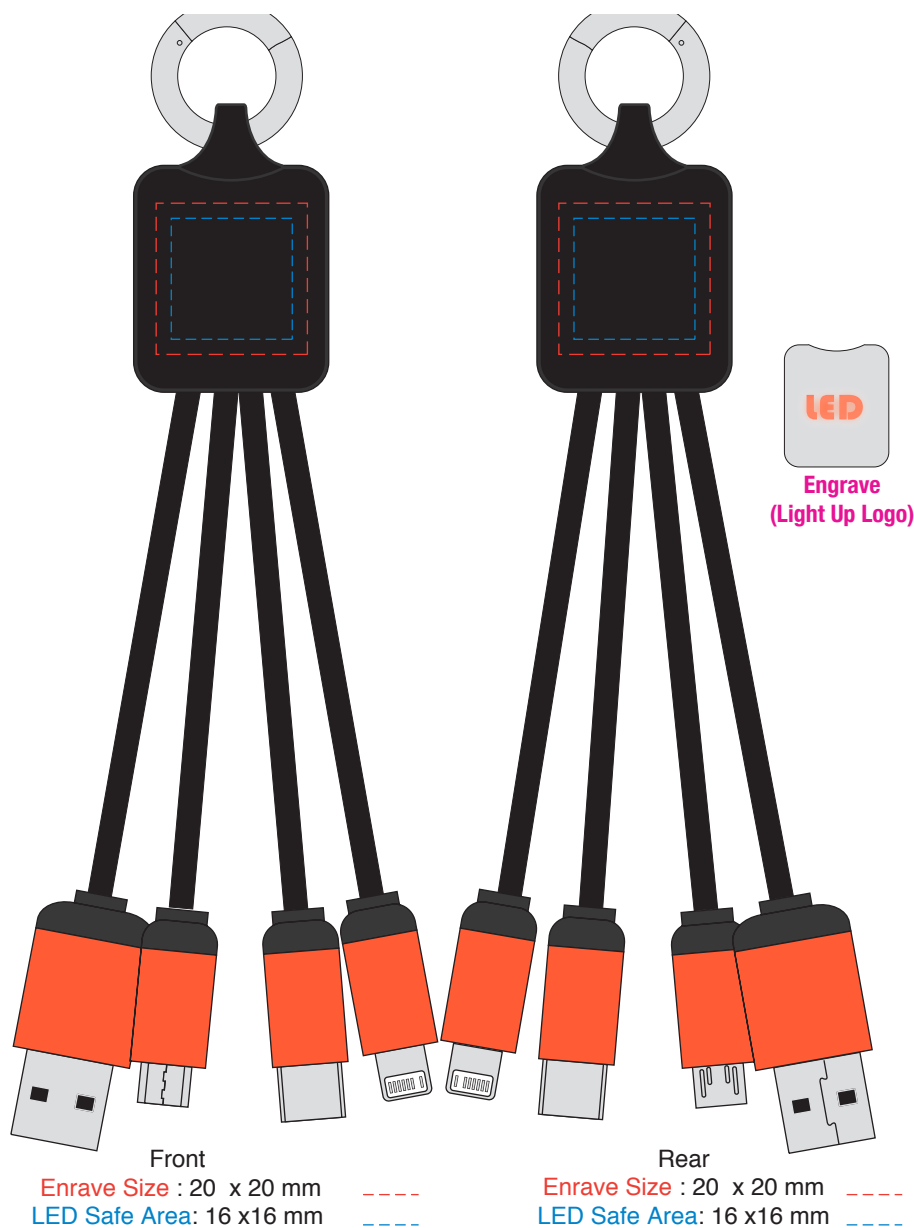
## AR870A

### Atesso 3n1 Light Up Charge Cable - Rectangle

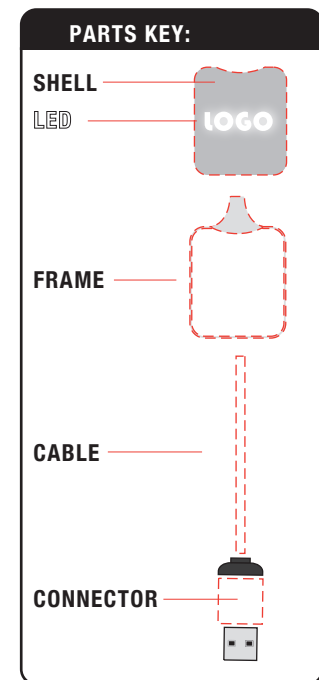
**Print Process:** Light-Up Logo, Pad Print is an option

**Product Size:** Cable Head: 38 x 26 x 12.6 mm, Length: 150 mm

**Colours:** Product Colour: Black/Silver & White (LED), Black/Gold & White (LED) (MOQ-100 pcs). Black/Blue & Blue (LED), Black/Orange & Orange (LED), Black/Red & Red (LED) (MOQ-250 pcs). Refer to our PDF template. Blue PMS 293C, Orange PMS 171C, Red PMS 199C



	ORANGE	PMS 171C
SHELL	black	
FRAME	black	
LED	orange	
CABLE	black	
CONNECTOR	orange	
FINISH	Rubber Coated	



Please follow these artwork guidelines: • Use and supply vector-based artwork • Illustrator compatible EPS or PDF with all fonts outlined • Indicate any critical colour details with the correct PMS colour • All Pantone colours need to be supplied as Pantone Coated (PMS C) colours • All details need to be “embedded” in the file, i.e. no linked artwork should be provided • Bleed is crucial when printing edge to edge. Artwork must extend beyond the finished and trim size dimensions.

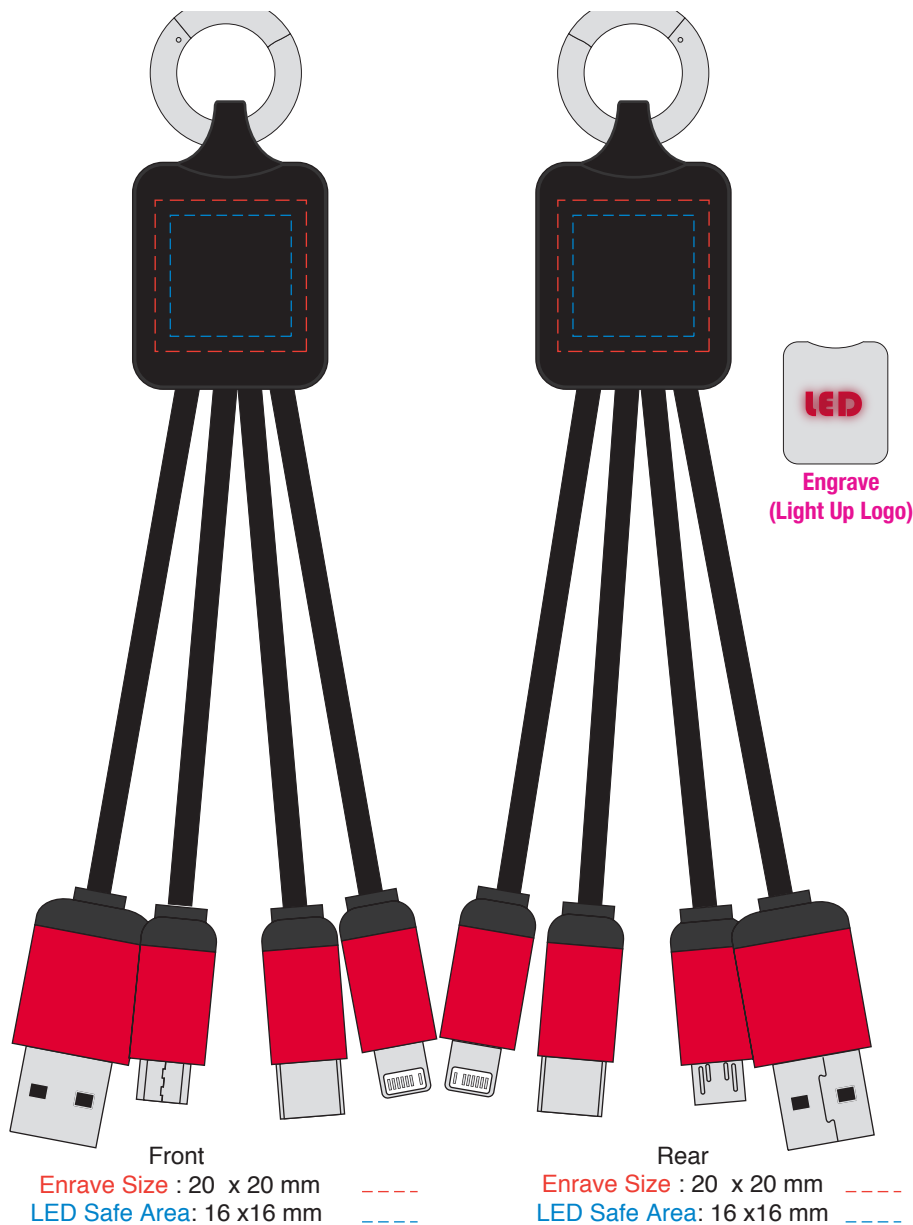
## AR870A

### Atesso 3n1 Light Up Charge Cable - Rectangle

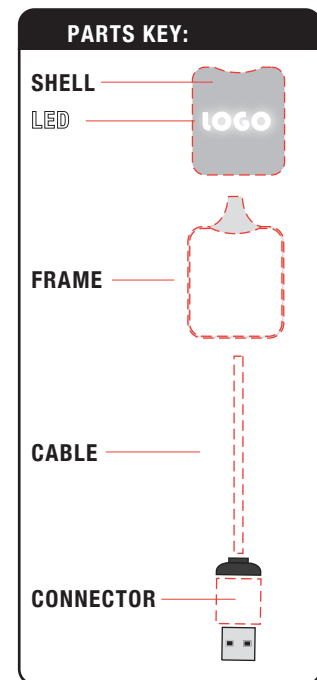
**Print Process:** Light-Up Logo, Pad Print is an option

**Product Size:** Cable Head: 38 x 26 x 12.6 mm, Length: 150 mm

**Colours:** Product Colour: Black/Silver & White (LED), Black/Gold & White (LED) (MOQ-100 pcs). Black/Blue & Blue (LED), Black/Orange & Orange (LED), Black/Red & Red (LED) (MOQ-250 pcs). Refer to our PDF template. Blue PMS 293C, Orange PMS 171C, Red PMS 199C



	RED	PMS 199C
SHELL	black	
FRAME	black	
LED	red	
CABLE	black	
CONNECTOR	red	
FINISH	UV Gloss	



Please follow these artwork guidelines: • Use and supply vector-based artwork • Illustrator compatible EPS or PDF with all fonts outlined • Indicate any critical colour details with the correct PMS colour • All Pantone colours need to be supplied as Pantone Coated (PMS C) colours • All details need to be “embedded” in the file, i.e. no linked artwork should be provided • Bleed is crucial when printing edge to edge. Artwork must extend beyond the finished and trim size dimensions.

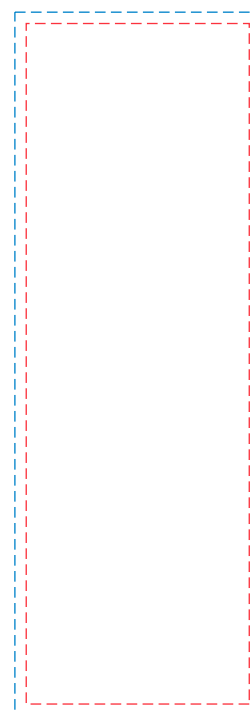
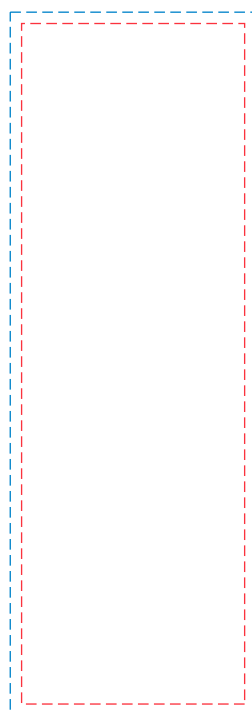
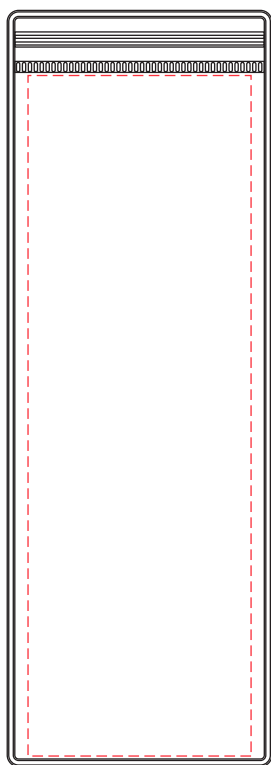
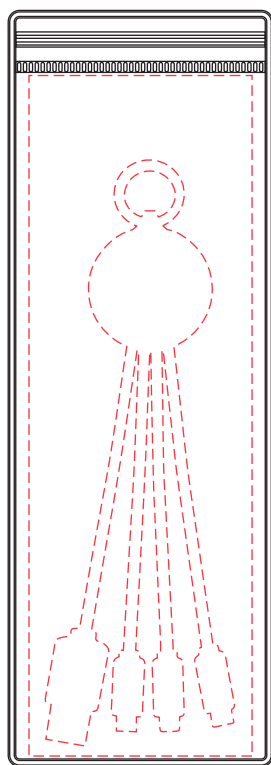
## AR870A

### Atesso 3n1 Light Up Charge Cable - Rectangle

**Print Process:** Light-Up Logo, Pad Print is an option

**Product Size:** Cable Head: 38 x 26 x 12.6 mm, Length: 150 mm

**Colours:** Product Colour: Black/Silver & White (LED), Black/Gold & White (LED) (MOQ-100 pcs). Black/Blue & Blue (LED), Black/Orange & Orange (LED), Black/Red & Red (LED) (MOQ-250 pcs). Refer to our PDF template. Blue PMS 293C, Orange PMS 171C, Red PMS 199C



Front

Print : 59 x 180 mm  
 4 Colour Process  
 (Allow 3 mm Bleed)

Rear

Print : 59 x 180 mm  
 4 Colour Process  
 (Allow 3 mm Bleed)

Front Insert

Print : 59 x 180 mm --  
 4 Colour Process  
 3 mm Bleed --

Rear Insert

Print : 59 x 180 mm --  
 4 Colour Process  
 3 mm Bleed --

50%

10mm

Please follow these artwork guidelines: • Use and supply vector-based artwork • Illustrator compatible EPS or PDF with all fonts outlined • Indicate any critical colour details with the correct PMS colour • All Pantone colours need to be supplied as Pantone Coated (PMS C) colours • All details need to be “embedded” in the file, i.e. no linked artwork should be provided • Bleed is crucial when printing edge to edge. Artwork must extend beyond the finished and trim size dimensions.

**AR870A**

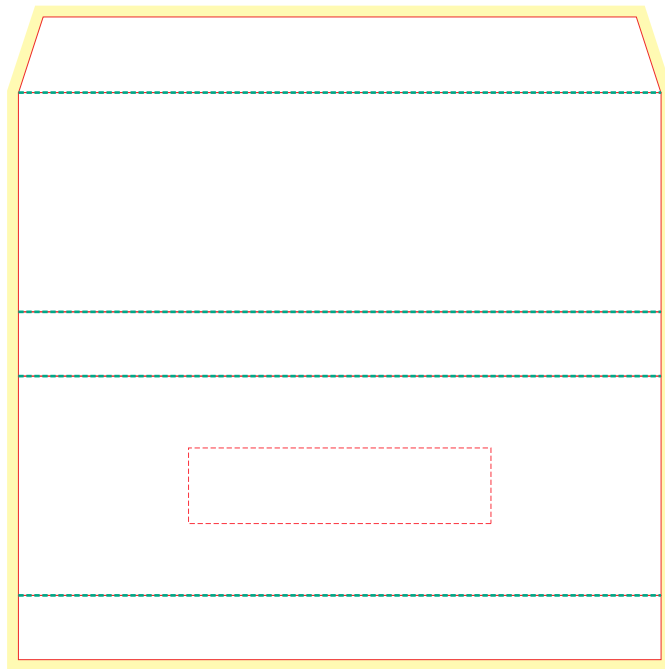
**Ateso 3n1 Light Up Charge Cable - Rectangle**

**Print Process:** Light-Up Logo, Pad Print is an option

**Product Size:** Cable Head: 38 x 26 x 12.6 mm, Length: 150 mm

**Colours:** Product Colour: Black/Silver & White (LED), Black/Gold & White (LED) (MOQ-100 pcs). Black/Blue & Blue (LED), Black/Orange & Orange (LED), Black/Red & Red (LED) (MOQ-250 pcs). Refer to our PDF template. Blue PMS 293C, Orange PMS 171C, Red PMS 199C

**Box Sleeve**

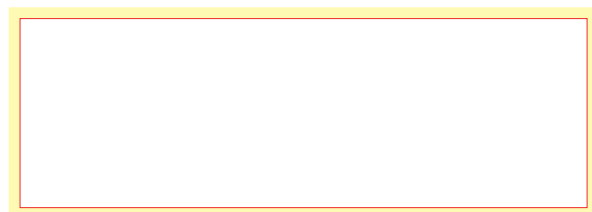


Custom Box Sleeve  
 170mm x 58mm x 17mm  
 4CP Print

Front  
 Print : 80 x 20mm  
 Foil Stamping



**Tray Inset**



Custom Box Inset  
 150mm x 50mm  
 4CP Print

— Dye Line  
 — Bleed (3mm)  
 - - - Folds



Please follow these artwork guidelines: • Use and supply vector-based artwork • Illustrator compatible EPS or PDF with all fonts outlined • Indicate any critical colour details with the correct PMS colour • All Pantone colours need to be supplied as Pantone Coated (PMS C) colours • All details need to be “embedded” in the file, i.e. no linked artwork should be provided • Bleed is crucial when printing edge to edge. Artwork must extend beyond the finished and trim size dimensions.