

AR870

Atesso 3n1 Light Up Charge Cable - Round

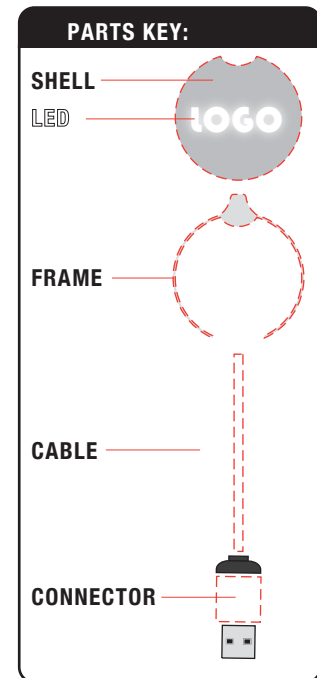
Branding Options: Light-Up Logo, Pad Print is an option

Product Size: Cable Head: 39 x 35 x 11.5 mm, Length: 150 mm

Colour: Product Colour: **BLACK:** Black (shell)_Silver (frame)_Black (cable)_Silver (connector)_White (LED), **GOLD:** Black (shell)_Gold (frame)_Black (cable)_Gold (connector)_White (LED), **BLUE:** Black (shell)_Blue (frame)_Black (cable)_Blue (connector)_Blue (LED), **ORANGE:** Black (shell)_Translucent (frame)_Black (cable)_Orange (connector)_Orange (LED), **RED:** Black (shell)_Red (frame)_Black (cable)_Red (connector)_Red (LED), **GREEN:** Green (shell)_Green (frame)_White (cable)_Green (connector)_White (LED), **WHITE:** White (shell)_Silver (frame)_White (cable)_Silver (connector)_Rainbow (LED). Refer to PDF template. Blue PMS 293C, Green PMS 3425C, Orange PMS 171C, Red PMS 199C.



	SILVER
SHELL	black
FRAME	silver
LED	white
CABLE	black
CONNECTOR	silver
FINISH	UV Gloss



Please follow these artwork guidelines • Use and supply vector-based artwork • Illustrator compatible EPS or PDF with all fonts outlined • Indicate any necessary colour details with the correct PMS colour • All Pantone colours need to be supplied as Pantone Coated (PMS C) colours • All specifics need to be "embedded" in the file, i.e. no linked artwork should be provided • Bleed is crucial when printing edge to edge. Artwork must extend beyond the finished and trim size dimensions.

AR870

Atesso 3n1 Light Up Charge Cable - Round

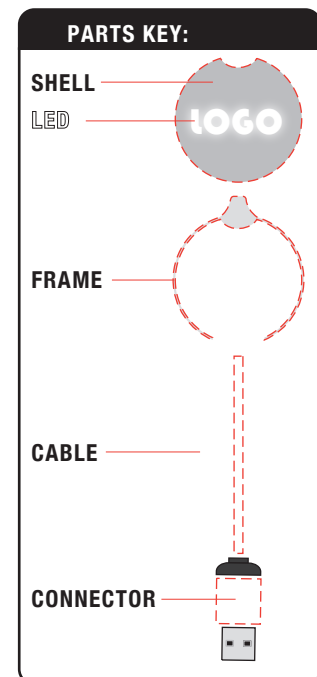
Branding Options: Light-Up Logo, Pad Print is an option

Product Size: Cable Head: 39 x 35 x 11.5 mm, Length: 150 mm

Colour: Product Colour: **BLACK:** Black (shell)_Silver (frame)_Black (cable)_Silver (connector)_White (LED), **GOLD:** Black (shell)_Gold (frame)_Black (cable)_Gold (connector)_White (LED), **BLUE:** Black (shell)_Blue (frame)_Black (cable)_Blue (connector)_Blue (LED), **ORANGE:** Black (shell)_Translucent (frame)_Black (cable)_Orange (connector)_Orange (LED), **RED:** Black (shell)_Red (frame)_Black (cable)_Red (connector)_Red (LED), **GREEN:** Green (shell)_Green (frame)_White (cable)_Green (connector)_White (LED), **WHITE:** White (shell)_Silver (frame)_White (cable)_Silver (connector)_Rainbow (LED). Refer to PDF template. Blue PMS 293C, Green PMS 3425C, Orange PMS 171C, Red PMS 199C.



SILVER WE	
SHELL	black
FRAME	white
LED	white
CABLE	black
CONNECTOR	silver
FINISH	UV Gloss



Please follow these artwork guidelines • Use and supply vector-based artwork • Illustrator compatible EPS or PDF with all fonts outlined • Indicate any necessary colour details with the correct PMS colour • All Pantone colours need to be supplied as Pantone Coated (PMS C) colours • All specifics need to be "embedded" in the file, i.e. no linked artwork should be provided • Bleed is crucial when printing edge to edge. Artwork must extend beyond the finished and trim size dimensions.

AR870

Atesso 3n1 Light Up Charge Cable - Round

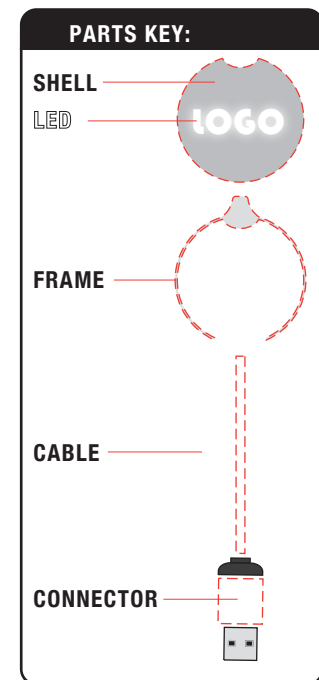
Branding Options: Light-Up Logo, Pad Print is an option

Product Size: Cable Head: 39 x 35 x 11.5 mm, Length: 150 mm

Colour: Product Colour: **BLACK:** Black (shell)_Silver (frame)_Black (cable)_Silver (connector)_White (LED), **GOLD:** Black (shell)_Gold (frame)_Black (cable)_Gold (connector)_White (LED), **BLUE:** Black (shell)_Blue (frame)_Black (cable)_Blue (connector)_Blue (LED), **ORANGE:** Black (shell)_Translucent (frame)_Black (cable)_Orange (connector)_Orange (LED), **RED:** Black (shell)_Red (frame)_Black (cable)_Red (connector)_Red (LED), **GREEN:** Green (shell)_Green (frame)_White (cable)_Green (connector)_White (LED), **WHITE:** White (shell)_Silver (frame)_White (cable)_Silver (connector)_Rainbow (LED). Refer to PDF template. Blue PMS 293C, Green PMS 3425C, Orange PMS 171C, Red PMS 199C.



	BLUE	PMS 293C
SHELL	black	
FRAME	blue	
LED	blue	
CABLE	black	
CONNECTOR	blue	
FINISH	UV Gloss	



Please follow these artwork guidelines • Use and supply vector-based artwork • Illustrator compatible EPS or PDF with all fonts outlined • Indicate any necessary colour details with the correct PMS colour • All Pantone colours need to be supplied as Pantone Coated (PMS C) colours • All specifics need to be "embedded" in the file, i.e. no linked artwork should be provided • Bleed is crucial when printing edge to edge. Artwork must extend beyond the finished and trim size dimensions.

AR870

Atesso 3n1 Light Up Charge Cable - Round

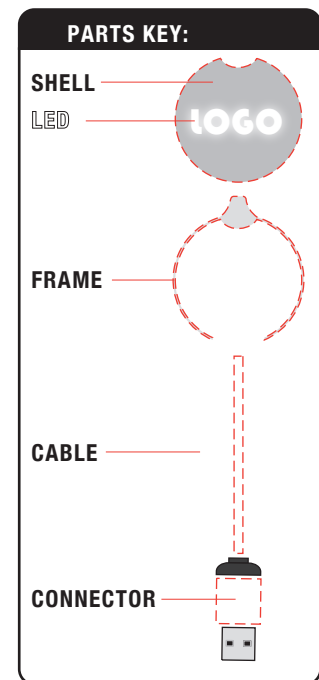
Branding Options: Light-Up Logo, Pad Print is an option

Product Size: Cable Head: 39 x 35 x 11.5 mm, Length: 150 mm

Colour: Product Colour: **BLACK:** Black (shell)_Silver (frame)_Black (cable)_Silver (connector)_White (LED), **GOLD:** Black (shell)_Gold (frame)_Black (cable)_Gold (connector)_White (LED), **BLUE:** Black (shell)_Blue (frame)_Black (cable)_Blue (connector)_Blue (LED), **ORANGE:** Black (shell)_Translucent (frame)_Black (cable)_Orange (connector)_Orange (LED), **RED:** Black (shell)_Red (frame)_Black (cable)_Red (connector)_Red (LED), **GREEN:** Green (shell)_Green (frame)_White (cable)_Green (connector)_White (LED), **WHITE:** White (shell)_Silver (frame)_White (cable)_Silver (connector)_Rainbow (LED). Refer to PDF template. Blue PMS 293C, Green PMS 3425C, Orange PMS 171C, Red PMS 199C.



	GOLD
SHELL	black
FRAME	gold
LED	white
CABLE	black
CONNECTOR	gold
FINISH	UV Gloss



Please follow these artwork guidelines • Use and supply vector-based artwork • Illustrator compatible EPS or PDF with all fonts outlined • Indicate any necessary colour details with the correct PMS colour • All Pantone colours need to be supplied as Pantone Coated (PMS C) colours • All specifics need to be "embedded" in the file, i.e. no linked artwork should be provided • Bleed is crucial when printing edge to edge. Artwork must extend beyond the finished and trim size dimensions.

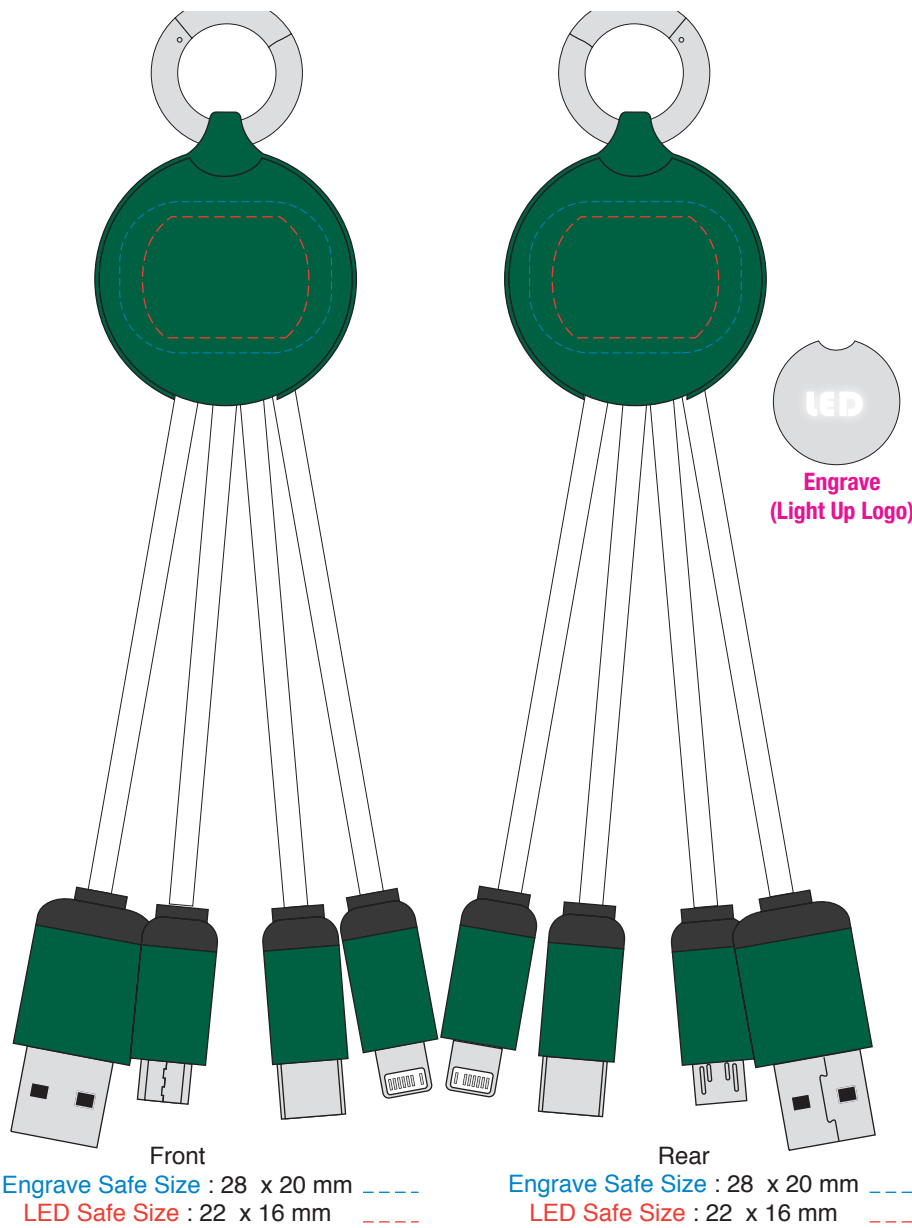
AR870

Atesso 3n1 Light Up Charge Cable - Round

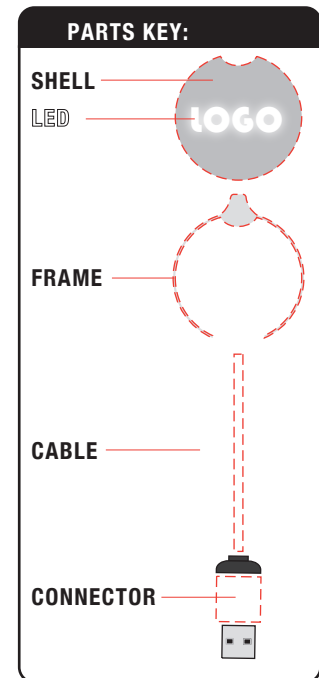
Branding Options: Light-Up Logo, Pad Print is an option

Product Size: Cable Head: 39 x 35 x 11.5 mm, Length: 150 mm

Colour: Product Colour: **BLACK:** Black (shell)_Silver (frame)_Black (cable)_Silver (connector)_White (LED), **GOLD:** Black (shell)_Gold (frame)_Black (cable)_Gold (connector)_White (LED), **BLUE:** Black (shell)_Blue (frame)_Black (cable)_Blue (connector)_Blue (LED), **ORANGE:** Black (shell)_Translucent (frame)_Black (cable)_Orange (connector)_Orange (LED), **RED:** Black (shell)_Red (frame)_Black (cable)_Red (connector)_Red (LED), **GREEN:** Green (shell)_ Green (frame)_White (cable)_Green (connector)_White (LED), **WHITE:** White (shell)_Silver (frame)_White (cable)_Silver (connector)_Rainbow (LED). Refer to PDF template. Blue PMS 293C, Green PMS 3425C, Orange PMS 171C, Red PMS 199C.



	GREEN	PMS 3425C
SHELL	green	
FRAME	green	
LED	white	
CABLE	white	
CONNECTOR	green	
FINISH	Rubber Coating	



Please follow these artwork guidelines • Use and supply vector-based artwork • Illustrator compatible EPS or PDF with all fonts outlined • Indicate any necessary colour details with the correct PMS colour • All Pantone colours need to be supplied as Pantone Coated (PMS C) colours • All specifics need to be "embedded" in the file, i.e. no linked artwork should be provided • Bleed is crucial when printing edge to edge. Artwork must extend beyond the finished and trim size dimensions.

AR870

Atesso 3n1 Light Up Charge Cable - Round

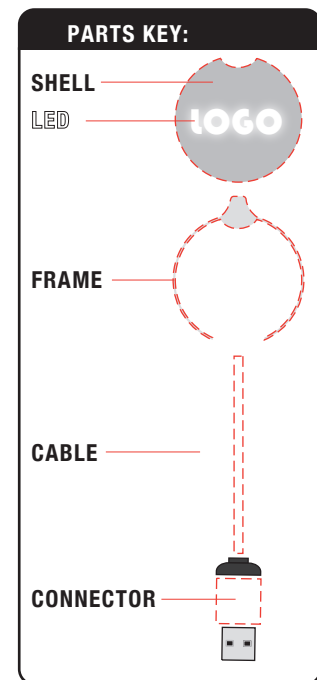
Branding Options: Light-Up Logo, Pad Print is an option

Product Size: Cable Head: 39 x 35 x 11.5 mm, Length: 150 mm

Colour: Product Colour: **BLACK:** Black (shell)_Silver (frame)_Black (cable)_Silver (connector)_White (LED), **GOLD:** Black (shell)_Gold (frame)_Black (cable)_Gold (connector)_White (LED), **BLUE:** Black (shell)_Blue (frame)_Black (cable)_Blue (connector)_Blue (LED), **ORANGE:** Black (shell)_Translucent (frame)_Black (cable)_Orange (connector)_Orange (LED), **RED:** Black (shell)_Red (frame)_Black (cable)_Red (connector)_Red (LED), **GREEN:** Green (shell)_Green (frame)_White (cable)_Green (connector)_White (LED), **WHITE:** White (shell)_Silver (frame)_White (cable)_Silver (connector)_Rainbow (LED). Refer to PDF template. Blue PMS 293C, Green PMS 3425C, Orange PMS 171C, Red PMS 199C.



	ORANGE	PMS 171C
SHELL	black	
FRAME	translucent	
LED	orange	
CABLE	black	
CONNECTOR	orange	
FINISH	Rubber Coating	



Please follow these artwork guidelines • Use and supply vector-based artwork • Illustrator compatible EPS or PDF with all fonts outlined • Indicate any necessary colour details with the correct PMS colour • All Pantone colours need to be supplied as Pantone Coated (PMS C) colours • All specifics need to be "embedded" in the file, i.e. no linked artwork should be provided • Bleed is crucial when printing edge to edge. Artwork must extend beyond the finished and trim size dimensions.

AR870

Atesso 3n1 Light Up Charge Cable - Round

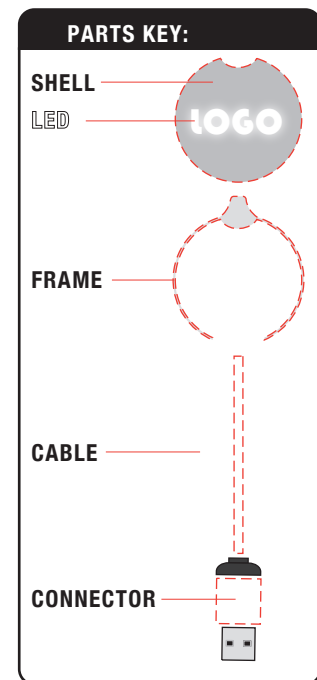
Branding Options: Light-Up Logo, Pad Print is an option

Product Size: Cable Head: 39 x 35 x 11.5 mm, Length: 150 mm

Colour: Product Colour: **BLACK:** Black (shell)_Silver (frame)_Black (cable)_Silver (connector)_White (LED), **GOLD:** Black (shell)_Gold (frame)_Black (cable)_Gold (connector)_White (LED), **BLUE:** Black (shell)_Blue (frame)_Black (cable)_Blue (connector)_Blue (LED), **ORANGE:** Black (shell)_Translucent (frame)_Black (cable)_Orange (connector)_Orange (LED), **RED:** Black (shell)_Red (frame)_Black (cable)_Red (connector)_Red (LED), **GREEN:** Green (shell)_Green (frame)_White (cable)_Green (connector)_White (LED), **WHITE:** White (shell)_Silver (frame)_White (cable)_Silver (connector)_Rainbow (LED). Refer to PDF template. Blue PMS 293C, Green PMS 3425C, Orange PMS 171C, Red PMS 199C.



	RED	PMS 199C
SHELL	black	
FRAME	red	
LED	red	
CABLE	black	
CONNECTOR	red	
FINISH	UV Gloss	



Please follow these artwork guidelines • Use and supply vector-based artwork • Illustrator compatible EPS or PDF with all fonts outlined • Indicate any necessary colour details with the correct PMS colour • All Pantone colours need to be supplied as Pantone Coated (PMS C) colours • All specifics need to be "embedded" in the file, i.e. no linked artwork should be provided • Bleed is crucial when printing edge to edge. Artwork must extend beyond the finished and trim size dimensions.

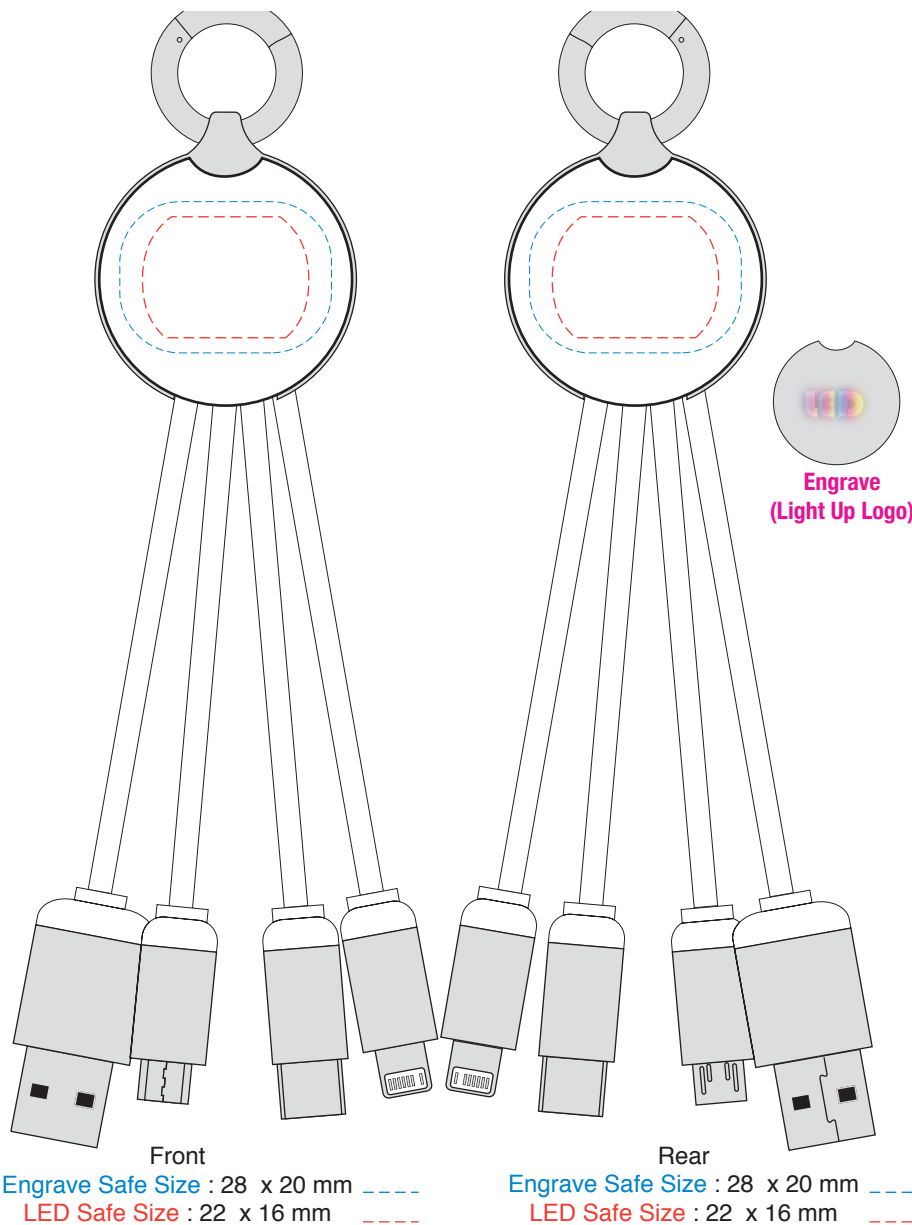
AR870

Ateso 3n1 Light Up Charge Cable - Round

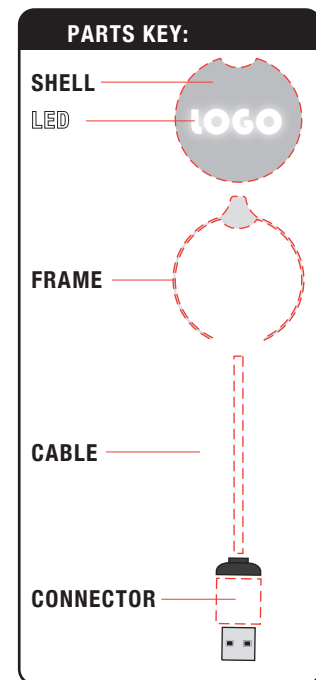
Branding Options: Light-Up Logo, Pad Print is an option

Product Size: Cable Head: 39 x 35 x 11.5 mm, Length: 150 mm

Colour: Product Colour: **BLACK:** Black (shell)_Silver (frame)_Black (cable)_Silver (connector)_White (LED), **GOLD:** Black (shell)_Gold (frame)_Black (cable)_Gold (connector)_White (LED), **BLUE:** Black (shell)_Blue (frame)_Black (cable)_Blue (connector)_Blue (LED), **ORANGE:** Black (shell)_Translucent (frame)_Black (cable)_Orange (connector)_Orange (LED), **RED:** Black (shell)_Red (frame)_Black (cable)_Red (connector)_Red (LED), **GREEN:** Green (shell)_Green (frame)_White (cable)_Green (connector)_White (LED), **WHITE:** White (shell)_Silver (frame)_White (cable)_Silver (connector)_Rainbow (LED). Refer to PDF template. Blue PMS 293C, Green PMS 3425C, Orange PMS 171C, Red PMS 199C.



	WHITE
SHELL	white
FRAME	silver
LED	Spectrum
CABLE	white
CONNECTOR	silver
FINISH	UV Gloss



Please follow these artwork guidelines • Use and supply vector-based artwork • Illustrator compatible EPS or PDF with all fonts outlined • Indicate any necessary colour details with the correct PMS colour • All Pantone colours need to be supplied as Pantone Coated (PMS C) colours • All specifics need to be "embedded" in the file, i.e. no linked artwork should be provided • Bleed is crucial when printing edge to edge. Artwork must extend beyond the finished and trim size dimensions.

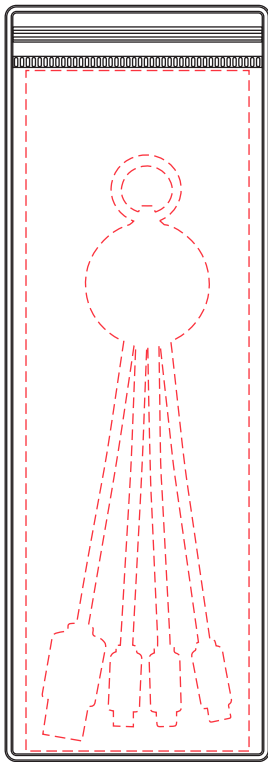
AR870

Atesso 3n1 Light Up Charge Cable - Round

Branding Options: Light-Up Logo, Pad Print is an option

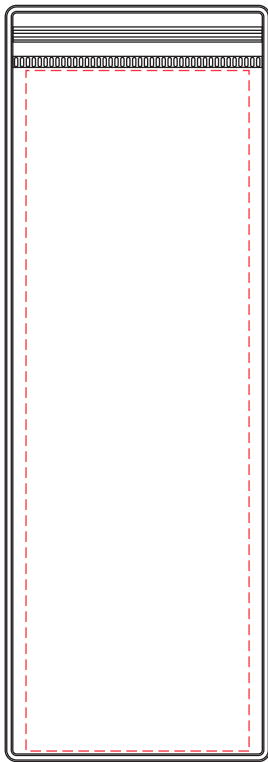
Product Size: Cable Head: 39 x 35 x 11.5 mm, Length: 150 mm

Colour: Product Colour: BLACK: Black (shell)_Silver (frame)_Black (cable)_Silver (connector)_White (LED), GOLD: Black (shell)_Gold (frame)_Black (cable)_Gold (connector)_White (LED), BLUE: Black (shell)_Blue (frame)_Black (cable)_Blue (connector)_Blue (LED), ORANGE: Black (shell)_Translucent (frame)_Black (cable)_Orange (connector)_Orange (LED), RED: Black (shell)_Red (frame)_Black (cable)_Red (connector)_Red (LED), GREEN: Green (shell)_Green (frame)_White (cable)_Green (connector)_White (LED), WHITE: White (shell)_Silver (frame)_White (cable)_Silver (connector)_Rainbow (LED). Refer to PDF template. Blue PMS 293C, Green PMS 3425C, Orange PMS 171C, Red PMS 199C.



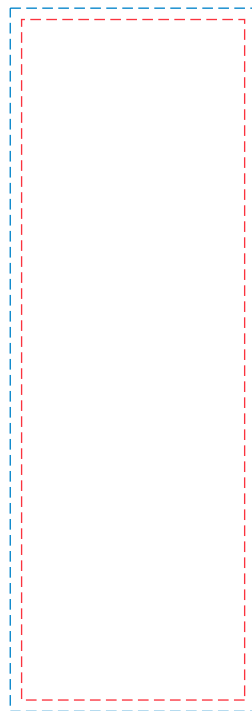
Front

Print : 59 x 180 mm
 4 Colour Process
 (Allow 3 mm Bleed)



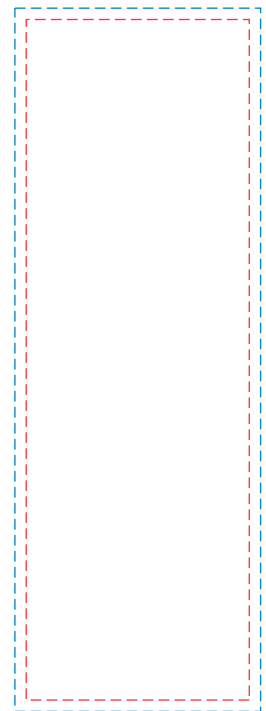
Rear

Print : 59 x 180 mm
 4 Colour Process
 (Allow 3 mm Bleed)



Front Insert

Print : 59 x 180 mm --
 4 Colour Process
 3 mm Bleed --



Rear Insert

Print : 59 x 180 mm --
 4 Colour Process
 3 mm Bleed --



Please follow these artwork guidelines • Use and supply vector-based artwork • Illustrator compatible EPS or PDF with all fonts outlined • Indicate any necessary colour details with the correct PMS colour • All Pantone colours need to be supplied as Pantone Coated (PMS C) colours • All specifics need to be "embedded" in the file, i.e. no linked artwork should be provided • Bleed is crucial when printing edge to edge. Artwork must extend beyond the finished and trim size dimensions.

AR870

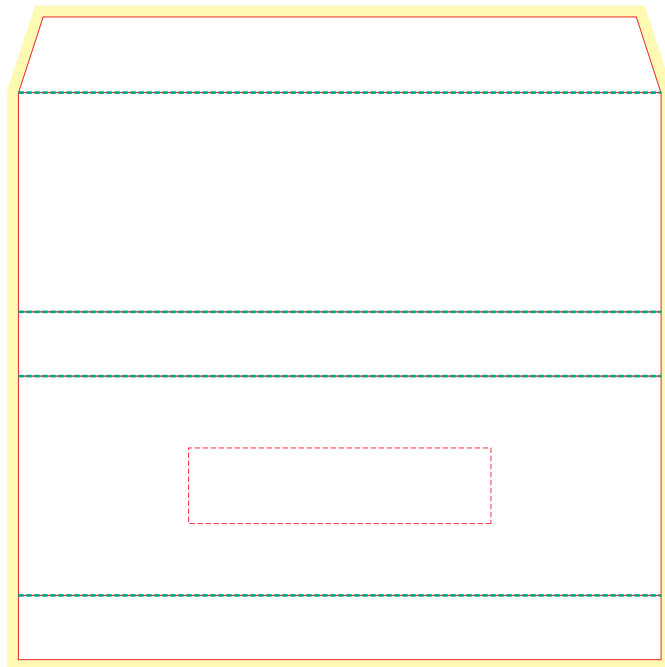
Atesso 3n1 Light Up Charge Cable - Round

Branding Options: Light-Up Logo, Pad Print is an option

Product Size: Cable Head: 39 x 35 x 11.5 mm, Length: 150 mm

Colour: Product Colour: BLACK: Black (shell)_Silver (frame)_Black (cable)_Silver (connector)_White (LED), GOLD: Black (shell)_Gold (frame)_Black (cable)_Gold (connector)_White (LED), BLUE: Black (shell)_Blue (frame)_Black (cable)_Blue (connector)_Blue (LED), ORANGE: Black (shell)_Translucent (frame)_Black (cable)_Orange (connector)_Orange (LED), RED: Black (shell)_Red (frame)_Black (cable)_Red (connector)_Red (LED), GREEN: Green (shell)_Green (frame)_White (cable)_Green (connector)_White (LED), WHITE: White (shell)_Silver (frame)_White (cable)_Silver (connector)_Rainbow (LED). Refer to PDF template. Blue PMS 293C, Green PMS 3425C, Orange PMS 171C, Red PMS 199C.

Box Sleeve

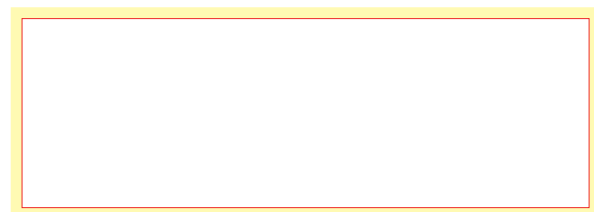


Custom Box Sleeve
 170mm x 58mm x 17mm
 4CP Print

Front
 Print : 80 x 20mm
 Foil Stamping



Tray Inset



Custom Box Inset
 150mm x 50mm
 4CP Print

— Dye Line
 — Bleed (3mm)
 - - - Folds



Please follow these artwork guidelines • Use and supply vector-based artwork • Illustrator compatible EPS or PDF with all fonts outlined • Indicate any necessary colour details with the correct PMS colour • All Pantone colours need to be supplied as Pantone Coated (PMS C) colours • All specifics need to be "embedded" in the file, i.e. no linked artwork should be provided • Bleed is crucial when printing edge to edge. Artwork must extend beyond the finished and trim size dimensions.

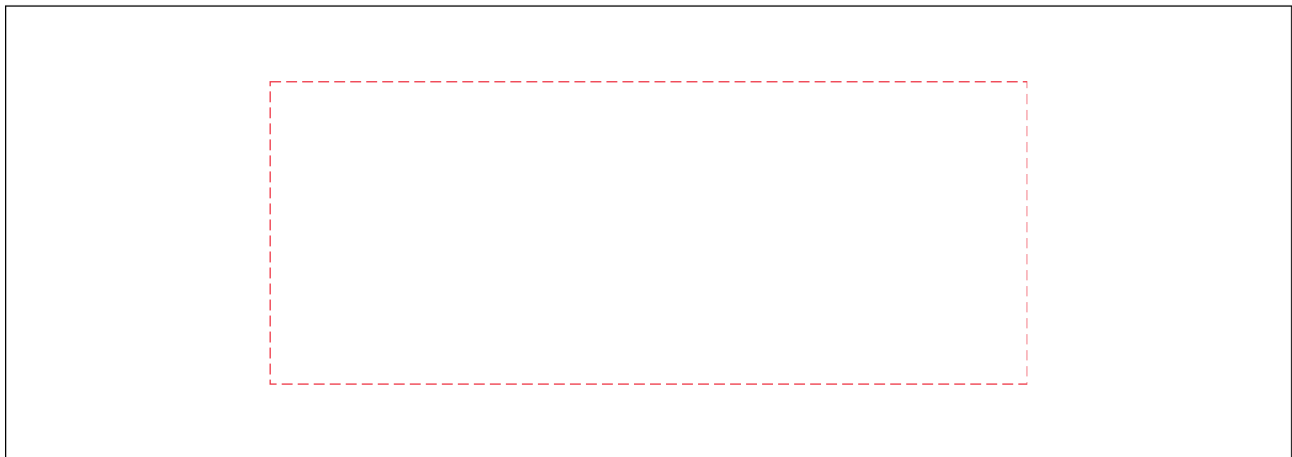
AR870

Atesso 3n1 Light Up Charge Cable - Round

Branding Options: Light-Up Logo, Pad Print is an option

Product Size: Cable Head: 39 x 35 x 11.5 mm, Length: 150 mm

Colour: Product Colour: BLACK: Black (shell)_Silver (frame)_Black (cable)_Silver (connector)_White (LED), GOLD: Black (shell)_Gold (frame)_Black (cable)_Gold (connector)_White (LED), BLUE: Black (shell)_Blue (frame)_Black (cable)_Blue (connector)_Blue (LED), ORANGE: Black (shell)_Translucent (frame)_Black (cable)_Orange (connector)_Orange (LED), RED: Black (shell)_Red (frame)_Black (cable)_Red (connector)_Red (LED), GREEN: Green (shell)_Green (frame)_White (cable)_Green (connector)_White (LED), WHITE: White (shell)_Silver (frame)_White (cable)_Silver (connector)_Rainbow (LED). Refer to PDF template. Blue PMS 293C, Green PMS 3425C, Orange PMS 171C, Red PMS 199C.



Box Face

Branding : 100 x 40 mm (w x h)
1 Colour Print

PK057 - Kraft Tuck Box 1
Box Dimensions 170 x 60 x 12 mm



----- Extent of Branding
(Not To Be Printed)

Please follow these artwork guidelines • Use and supply vector-based artwork • Illustrator compatible EPS or PDF with all fonts outlined • Indicate any necessary colour details with the correct PMS colour • All Pantone colours need to be supplied as Pantone Coated (PMS C) colours • All specifics need to be "embedded" in the file, i.e. no linked artwork should be provided • Bleed is crucial when printing edge to edge. Artwork must extend beyond the finished and trim size dimensions.

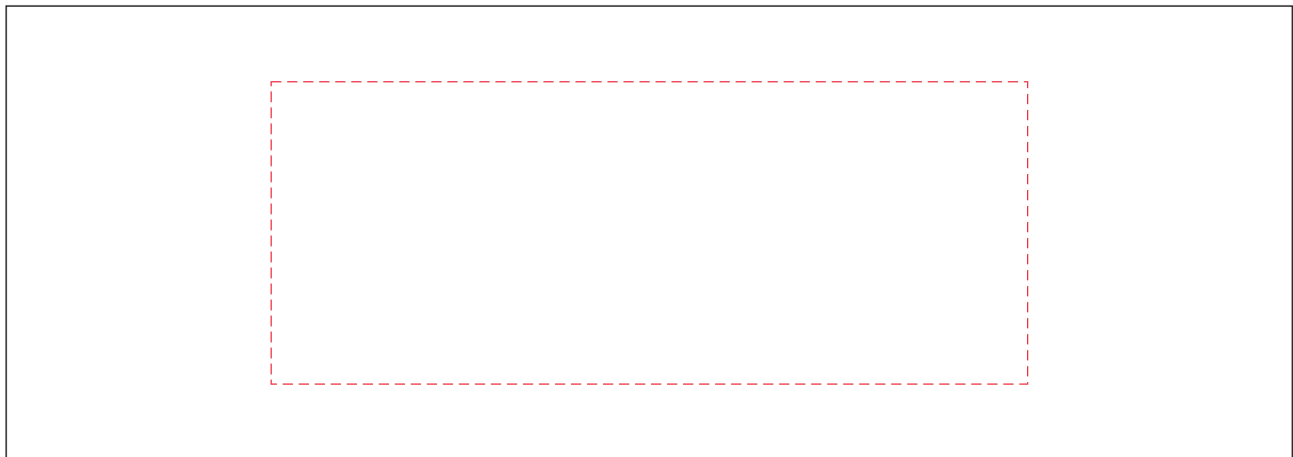
AR870

Atesso 3n1 Light Up Charge Cable - Round

Branding Options: Light-Up Logo, Pad Print is an option

Product Size: Cable Head: 39 x 35 x 11.5 mm, Length: 150 mm

Colour: Product Colour: BLACK: Black (shell)_Silver (frame)_Black (cable)_Silver (connector)_White (LED), GOLD: Black (shell)_Gold (frame)_Black (cable)_Gold (connector)_White (LED), BLUE: Black (shell)_Blue (frame)_Black (cable)_Blue (connector)_Blue (LED), ORANGE: Black (shell)_Translucent (frame)_Black (cable)_Orange (connector)_Orange (LED), RED: Black (shell)_Red (frame)_Black (cable)_Red (connector)_Red (LED), GREEN: Green (shell)_Green (frame)_White (cable)_Green (connector)_White (LED), WHITE: White (shell)_Silver (frame)_White (cable)_Silver (connector)_Rainbow (LED). Refer to PDF template. Blue PMS 293C, Green PMS 3425C, Orange PMS 171C, Red PMS 199C.



Box Face

Branding : 100 x 40 mm (w x h)
1 Colour Print

PK058 - Kraft Sliding Gift Box 1
Box Dimensions 170 x 60 x 18 mm



----- Extent of Branding
(Not To Be Printed)

Please follow these artwork guidelines • Use and supply vector-based artwork • Illustrator compatible EPS or PDF with all fonts outlined • Indicate any necessary colour details with the correct PMS colour • All Pantone colours need to be supplied as Pantone Coated (PMS C) colours • All specifics need to be "embedded" in the file, i.e. no linked artwork should be provided • Bleed is crucial when printing edge to edge. Artwork must extend beyond the finished and trim size dimensions.